



**COLINE**  
COLINECABINetry



**2023**





In 2010, Coline Cabinetry Inc was established with the statement of “The kitchen you imagine can be yours”. Bring an uncompromising quality “All-Wood” constructed products to our agents, distributors, and end-users. In 2022, Coline Cabinetry Inc introduced its new production lines with frameless fully customized cabinets as well as integrated closets, vanities, and modern glass shower doors. We partnered with a leading woodcraft manufacturer in Long Island, New York. Coline has successfully delivered a variety of design solutions with high-quality cabinets and comprehensive personalized services over 10 years.

As an advocate of the “kitchen revolution”, Coline its all-new production lines equipped German technology. Also, in the product manufacturing process is automated, informatized and refined to ensure that every step of the product, from design, cutting, surface treatment, assembly, transportation to service has been achieved.

Coline has maintained a strong, stable, and rapid development. We will continue to innovate and surpass with the spirit of “The kitchen you imagine can be yours”, to continuously improve the company’s core competitiveness, and to provide quality services to our customers.





# INDEX

## CONTENTS

+ NEW PANEL COLORS	4
+ DORATO GREY	5
+ DORATO NATURAL	6
+ MATTE BLACK	7
+ GLOOS BLACK	8
+ GLOSSY WHITE	9
+ ICE BLUE	10
+ DRIFTWOOD	11
+ WHITE SHAKER	12
+ GRAY SHAKER	13
+ PURE WHITE	14
+ EXPRESSO SHAKER	15
+ VANITIES	16
+ GLASS SHOWER DOOR	17
+ GLASS SHOWER DOOR	18
+ GLASS SHOWER DOOR	19
+ HARDWARES	20
+ BASIC CABINETS MEASUREMENTS & SIZES	22
+ ORDERING FORM	23





# NEW PANEL COLORS



Dark Grey Finition



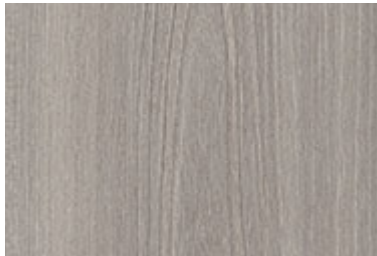
Dorato Grey



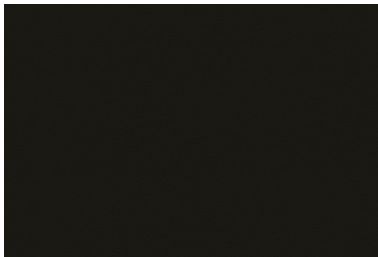
Dorato Natural



Driftwood



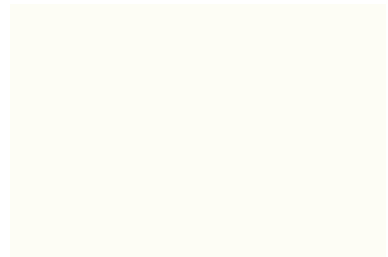
Fox Grey Tossini Elm



Glossy Black



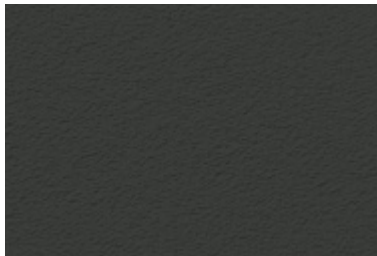
Glossy Grey



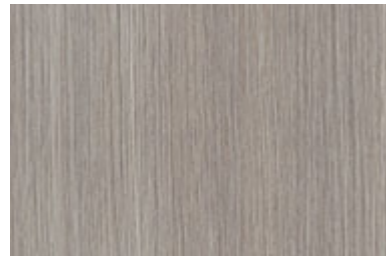
Glossy White



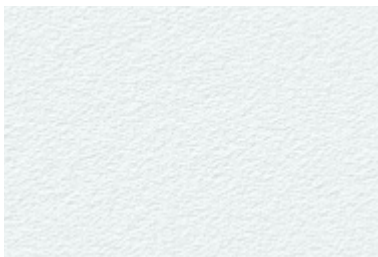
Grey Beige Tossini Elm



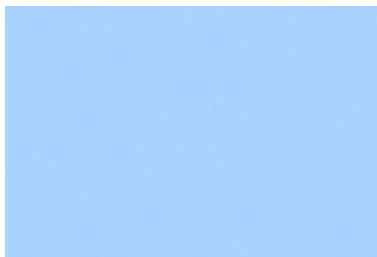
Matte Black



Medium Grey Finition



Pearl White



Ultra Blue



White Tossini Elm







# DORATO GREY

**AVAILABILITY**

**IN STOCK**

**LEAD TIME**

**3~5 DAYS**

## DORATO GREY

EVERYONE'S LIFE CAN BE COLORFUL, BUT KITCHEN HOME NEEDS TO BE PURE TO SIMPLE, HIGH-QUALITY, AND ELEGANT WOOD GRAIN COLOR MATCHING, WHICH CAN GIVE PEOPLE INNER PEACE AND JOY, AND MAKE EVERY COOKING FULL OF EXPECTATIONS!



# DORATO NATURAL



## DORATO NATURAL

THE KITCHEN IS THE “HEART” OF THE HOME, ONE IS EASY TO USE, A COMFORTABLE LOOKING KITCHEN CAN MAKE LIFE MORE EXCITING, LET’S CAPTURE THE YEARNING AND LONGING FOR HOME AGAIN !

**AVAILABILITY**

**IN STOCK**

**LEAD TIME**

**3~5 DAYS**





# MATTE BLACK

AVAILABILITY

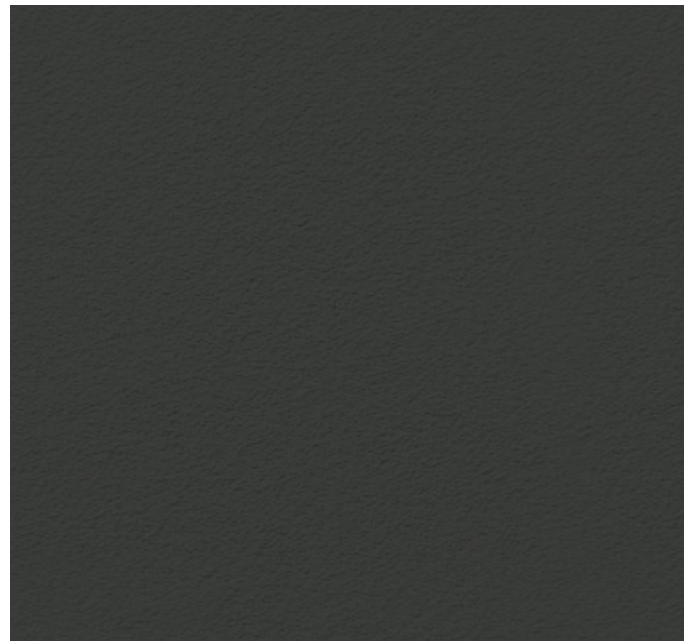
IN STOCK

LEAD TIME

3~5 DAYS

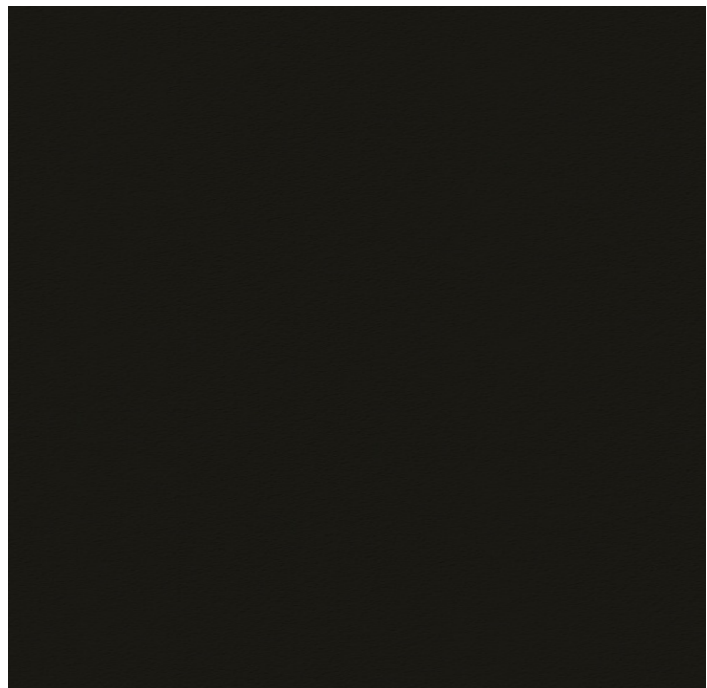
## MATTE BLACK

THE UNOBTRUSIVE AND SIMPLE BLACK SERIES IS A POPULAR STYLE IN RECENT YEARS. THE MATTE GRAY IS MATCHED WITH VARIOUS COUNTERTOPS TO MAKE THE KITCHEN CABINETS PERFECTLY BALANCED AND LOW-KEY IN THE HOME SCREEN, BUT IT ALWAYS ATTRACTS YOUR ATTENTION!





# GLOOS BLACK



## GLOSSY BLACK

THE TASTE OF LIFE NEEDS CAREFUL  
DEPLOYMENT,  
THE TASTE OF LIFE NEEDS TO BE SHARED  
WITH EACH OTHER,  
NOT ONLY CAN YOU COOK THREE MEALS A  
DAY HERE,  
IT CAN ALSO SUBLIMATE THE EMOTIONAL  
TEMPERATURE IN THE FIREWORKS!

**AVAILABILITY**

**IN STOCK**

**LEAD TIME**

**3~5 DAYS**







# GLOSSY WHITE

**AVAILABILITY**

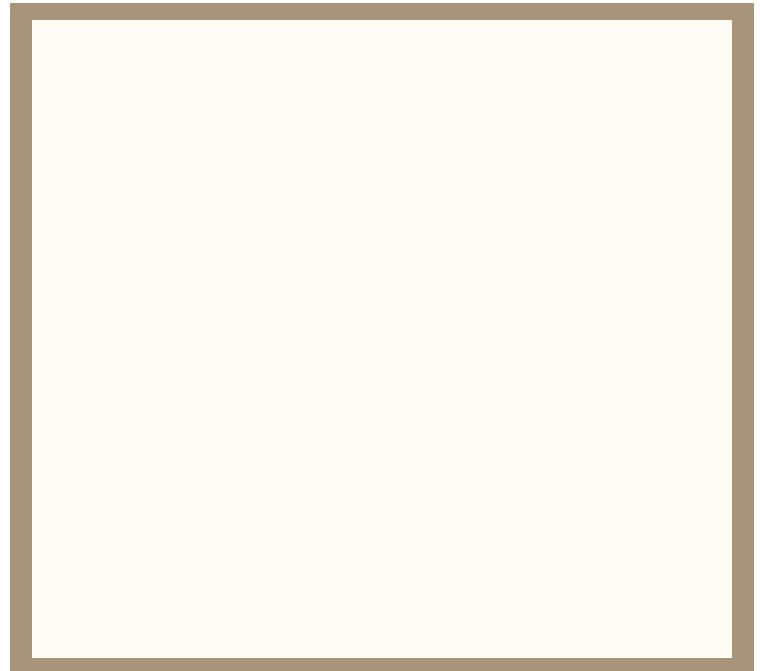
**IN STOCK**

**LEAD TIME**

**3~5 DAYS**

## GLOSSY WHITE

THE STYLE BEHIND THE HOME IS DIFFERENT FROM THE INHERENT FORM, AND THE KITCHEN FUNCTION IS NOT LIMITED TO THREE MEALS A DAY, THE COLLISION OF ELEMENTS AND MATERIALS PRODUCES NOT ONLY A SENSE OF DESIGN, IT IS A DISTINCT AND ECLECTIC MODERN ATTITUDE, INTEGRATING THE CURRENT POPULAR AESTHETICS, CONSTRUCTING A STYLIZED SPACE, AESTHETICS BRINGS LIFE BACK TO ITS TRUE NATURE, PRESENTING A NATURAL BEAUTY OF WHITE



# ICE BLUE



**ICE BLUE**  
**BLUE OCEAN STYLE**  
CONCISE DESIGN METHOD WITH ADVANCED WOODS, HIGHLIGHT THE DELICACY AND CLEANLINESS OF THE SPACE, IN ADDITION TO STRAIGHTNESS, DEMAND COMES FIRST, FROM THE POINT OF VIEW OF LIVING, NEW OCEAN STYLE DOOR PANEL, COMMITTED TO CREATING A MORE ENVIRONMENTALLY FRIENDLY AND SAFE LIVING ENVIRONMENT!

**AVAILABILITY**

**IN STOCK**

**LEAD TIME**

**3~5 DAYS**





# DRIFTWOOD

## DRIFTWOOD

SIMPLE/DELICATE/SMART

INCORPORATE THE BRAND-NEW TECHNOLOGICAL WOOD GRAIN INTO THE PRODUCT DESIGN, WHICH IS DELICATE, GENTLE AND CONNOTATIVE, AND COMBINED WITH THE CLASSIC PRODUCT SHAPE, THE PAIRING BRINGS OUT A DIFFERENT KIND OF EXQUISITE BEAUTY !

AVAILABILITY

IN STOCK

LEAD TIME

3~5 DAYS



# WHITE SHAKER



12

SHAKER STYLE GETS ITS NAME FROM THE DISTINCTIVE SHAKER FURNITURE STYLE, WHICH USES SIMPLE, CLEAN LINES AND EMPHASIZES UTILITY. WHITE SHAKER IS THE HOTTEST STYLE IN THE MARKET. IT CAN ALMOST FIT IN EVERY HOME DESIGN FOR ITS SIMPLE AND CLEAN LOOK. AND IT IS ALSO A GOOD CHOICE FOR COMBINATIONS WITH ANOTHER DARK OR LIGHT COLOR OF CABINETS.

AVAILABILITY

IN STOCK

LEAD TIME

3~5 DAYS





## GRAY SHAKER

GRAY SHAKER IS THE NEWEST COLORS. GREY SHAKER-STYLE DOORS BECAME POPULAR BECAUSE THEIR SIMPLE STYLE LENDS ITSELF TO JUST ABOUT ANY DECOR FROM CONTEMPORARY TO TRADITIONAL WITH VARIATIONS IN WOOD SPECIES, STAINS, PAINT COLORS AND HARDWARE.

**AVAILABILITY**

**IN STOCK**

**LEAD TIME**

**3~5 DAYS**



13











## EXPRESSO SHAKER

SHAKER CABINETS ARE KNOWN FOR THEIR SQUARE EDGES OR BOX-SHAPED APPEARANCE. THINK OF A WOOD SLAB IN THE SHAPE OF A RECTANGLE AND WITHIN THAT BOX, IMAGINE ANOTHER SQUARE-SHAPED BOX, BUT SLIGHTLY SMALLER. THE OVERALL APPEARANCE OF SHAKER-STYLE CABINETS IS THAT OF A FOUR-CORNERED CABINET FRAME BUT WITH AN INSET PANEL. SHAKER KITCHEN CABINETS GENERALLY HAVE STRAIGHT LINES AND THEIR CURVES ARE USUALLY GENTLE. THE CRAFTING PROCESS OF SHAKER-STYLE CABINETS IS SLIGHTLY DIFFERENT FROM TRADITIONAL KITCHEN CABINETS AND THEY ARE COMPRISED OF FIVE PIECES WHICH INCLUDE: TWO RAILS, TWO STILES, AND A CENTER PANEL.





# VANITIES

AVAILABILITY

IN STOCK

LEAD TIME

3~5 DAYS

TURN YOUR BATHROOM INTO A EUROPEAN OASIS WITH OUR FRAMELESS BATHROOM CABINETS. OUR FRAMELESS BATHROOM VANITIES AND CABINETS ARE THE PERFECT COMBINATION OF STYLE, DURABILITY, AND SAVINGS TO TURN YOUR BATHROOM INTO A DREAM SPACE. ALL OF OUR FRAMELESS CABINETS COME READY-TO-ASSEMBLE AND SHIP STRAIGHT TO YOUR FRONT DOOR. IF YOU'RE READY TO SHOP FOR FRAMELESS BATHROOM CABINETRY, BROWSE THE POPULAR STYLES BELOW.





# GLASS SHOWER DOOR

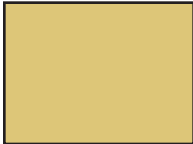
**AVAILABILITY**

**IN STOCK**

**FEATURES:**

- 1. ANTI-JUMP SYSTEM
- 2. MAX.72" WIDTH FOR AN OPEN AND SPACIOUS FEELING
- 3. STAINLESS STEEL ROLLERS CREATE AN EFFORTLESS OPERATION
- 4. RUBBER DOOR STOPPER PROTECTS THE GLASS DOOR
- 5. SGCC CERTIFIED TEMPERED GLASS
- 6. THE ANTI-SPLASH THRESHOLD IN L SHAPE TO PREVENT WATER SPILLS

**GOLD**



**BRUSHED  
NICKEL**



**MATTE  
BLCAK**





# GLASS SHOWER DOOR



18







## GLASS SHOWER DOOR



VERTICAL BLADE HANDLES ACCENTUATE THE CONTEMPORARY STYLE.

SIMPLIFIED INSTALLATION ALLOWS FOR OUT-OF-PLUMB ADJUSTABILITY WHILE THE GLASS IS INSTALLED TO ENSURE THE PERFECT FIT.







# HARDWARES



1.



2.





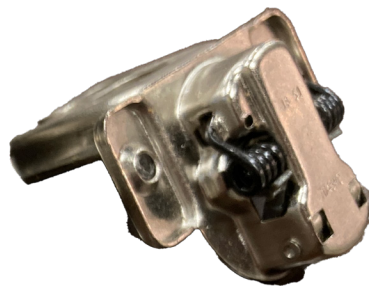


# ACCESSORIES

3.



6.



4.



7.



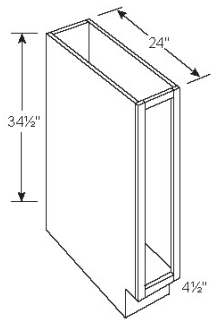
5.



8

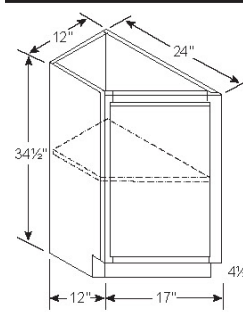


# MEASUREMENTS & SIZES



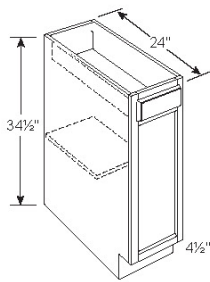
FULL HEIGHT  
SINGLE DOOR  
BASE CABINET

B9



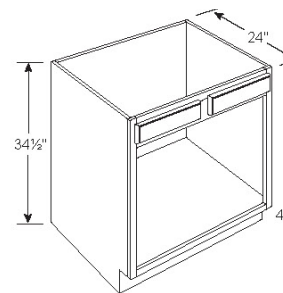
ANGLED  
TRANSITIONAL  
W/ FULL HEIGHT  
DOOR  
BASE CABINET  
(LEFT SHOW)

TAB12FHDL  
TAB12FHDR



SINGLE DOOR &  
DRAWER  
BASE CABINETS

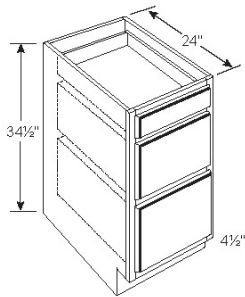
B12  
B15  
B18  
B21



DOUBLE DOOR  
SINK BASE CABINETS

SB30 SB27  
SB33 SB36  
SB24\*\*

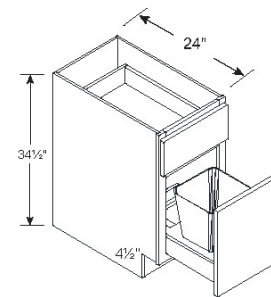
\*\*WILL HAVE CENTER STILE



THREE DRAWER  
BASE CABINETS

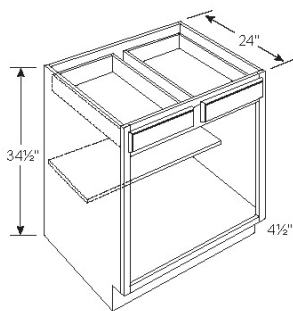
SINGLE TOP DRAWER ON ALL SIZES  
TOP DRAWER HEIGHT IN FULL OVERLAY  
STYLES 6 1/2", SIDE DEPTH 2 1/2"  
BOTTOM DRAWERS HEIGHT IN FULL  
OVERLAY STYLES 10 1/2", SIDE DEPTH 5 1/2"

DB15 DB24  
DB18 DB30



SINGLE TRASH CAN  
BASE

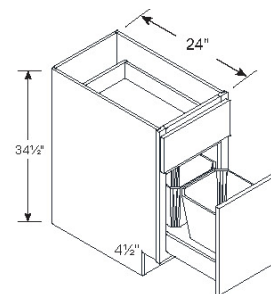
BWB15



DOUBLE DOOR  
& DRAWER  
BASE CABINETS

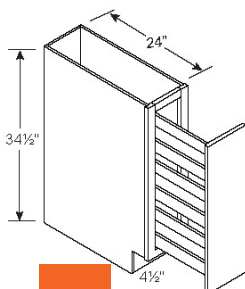
B24-2\* B36  
B27\* B33  
B30

\*SINGLE DRAWER HEAD  
\*\*WILL HAVE CENTER STILE



DOUBLE TRASH CAN  
BASE

BWB18  
BWB21



BASE PANTRY  
PULLOUT CABINET

BSR09  
BSR12

\*FULL EXTENSION  
HARDWARE





# ORDER FORM

Company Name: \_\_\_\_\_

Company Address: \_\_\_\_\_

Name of Contact: \_\_\_\_\_

Phone: \_\_\_\_\_ Fax: \_\_\_\_\_

Email: \_\_\_\_\_

Please draft your layout and measurements:

Please note any special cut or sizes:

Printed Name: \_\_\_\_\_

Signature: \_\_\_\_\_

Date: \_\_\_\_\_





**COLINE**  
COLINE CABINETRY



[www.ColineCabinetry.com](http://www.ColineCabinetry.com)

(718)-939-2199  
132-10 33rd Ave  
Flushing, NY 11354

(631)-881-5655  
1795 Expressway Dr N  
Happauge, NY 11788